

Entered skilzaco wd

150  
149  
120  
220

### THOMAS SUBDIVISION

Of the W.X. Hall 5.1 acre tract - John Austin League

Brazos County, Texas

T.R. NEWTON - CIVIL ENGR.

VOL. 142 P. 267 JAN., 1950

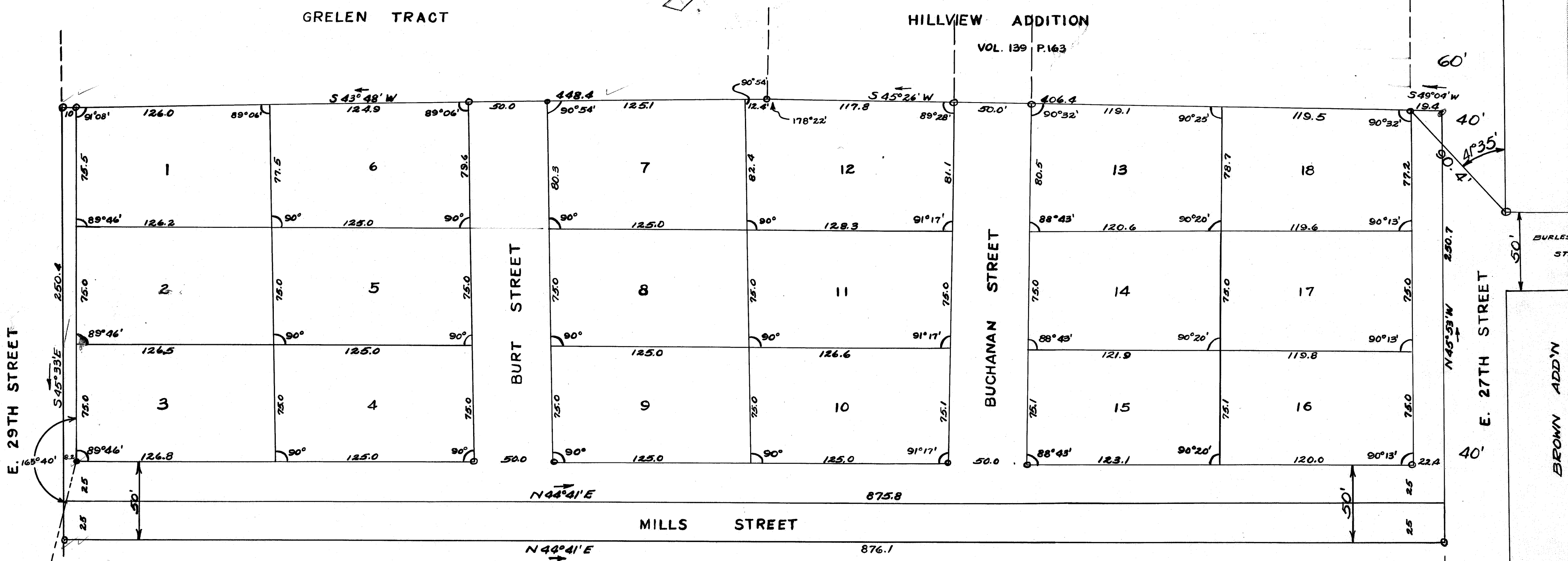
Scale: 1" = 50'

PPSS ADDITION  
VOL. 90 P. 586

MILLS

BLOCK 2

BLOCK 3



### JOHN LUZA TRACT

VOL. 138 P. 637

VOL. 140 P. 326

○ - Indicates concrete monument  
Others - iron bars  
Bearings to conform to Luza tract

352

306